

Our Institution Post-Graduation Outcomes

Institutional Research

Noah Pollock

October 12, 2018

About the Data

Data was integrated from three sources: Banner, Handshake, and the First-Destination Survey results. While data from Banner and Handshake can be considered extremely accurate, the First-Destination Survey (FDS) results should be interpreted with the understanding that the information is self-reported by students within 6 months of graduation.

Post-Graduation Outcomes

Outcome	Count	Percent
Employed	6367	63.7%
Grad School	2721	27.2%
Other	194	1.9%
Still Seeking	718	7.2%

Figure 1: Post-Graduation Outcomes by School

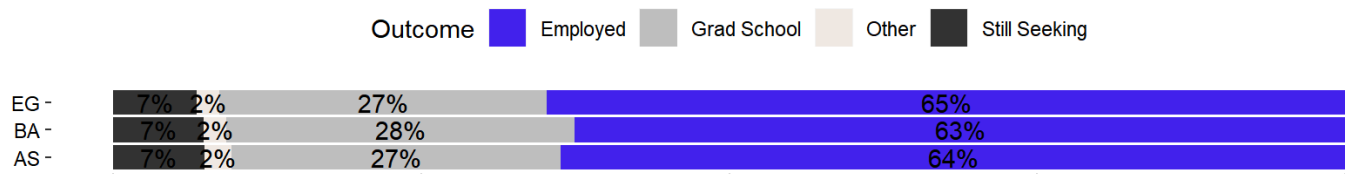
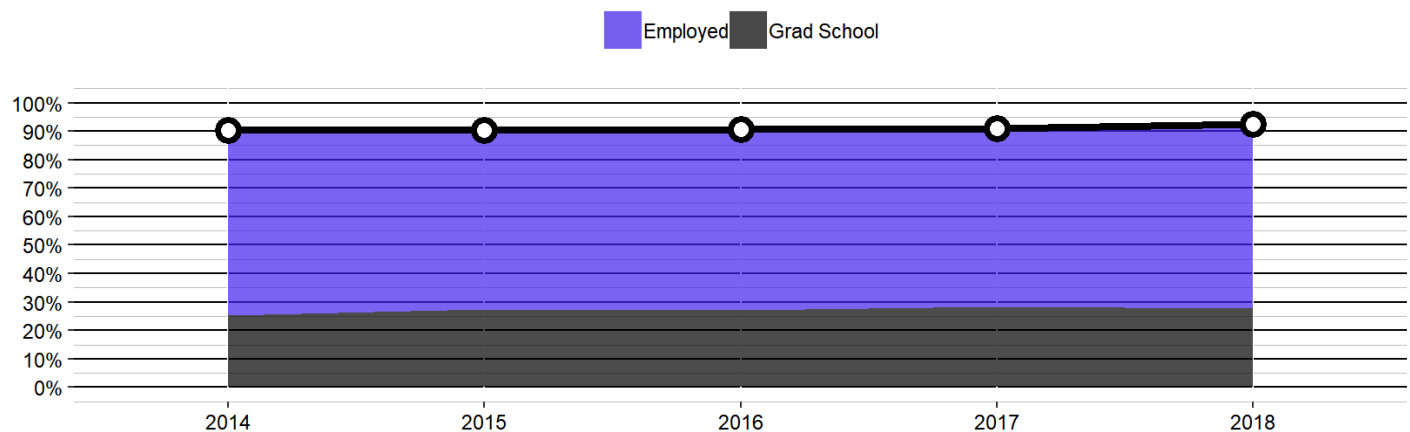
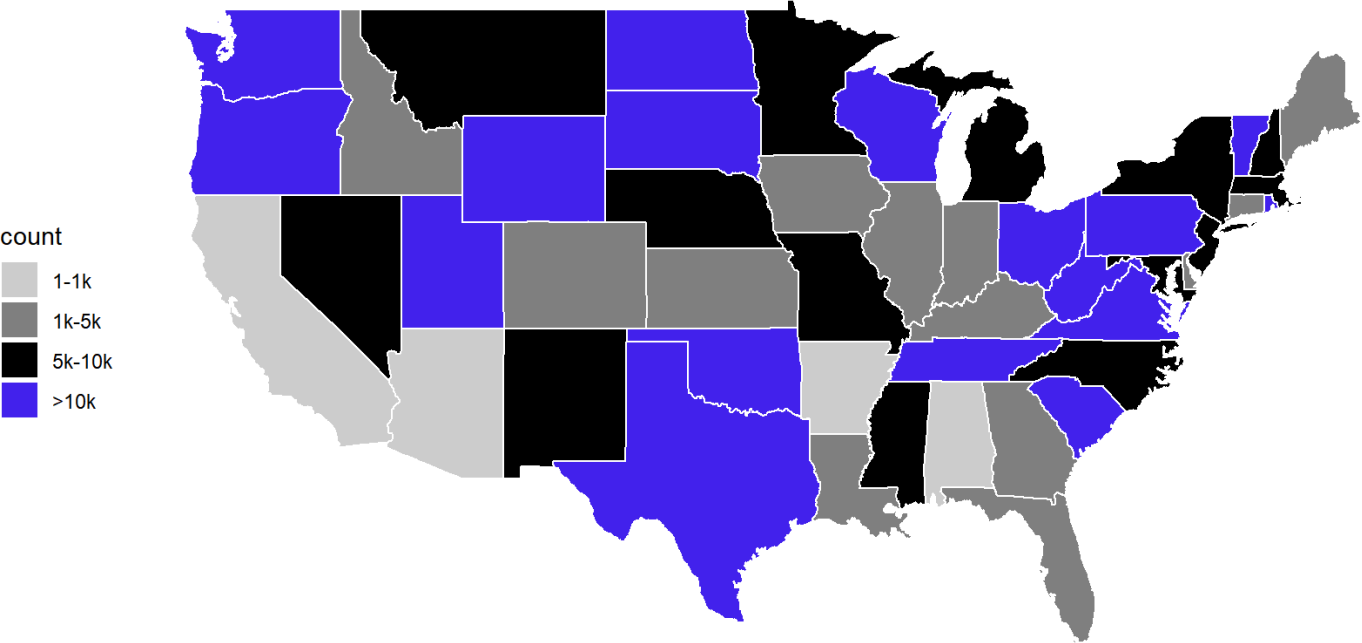


Figure 2: Post-Graduation Outcomes over Time

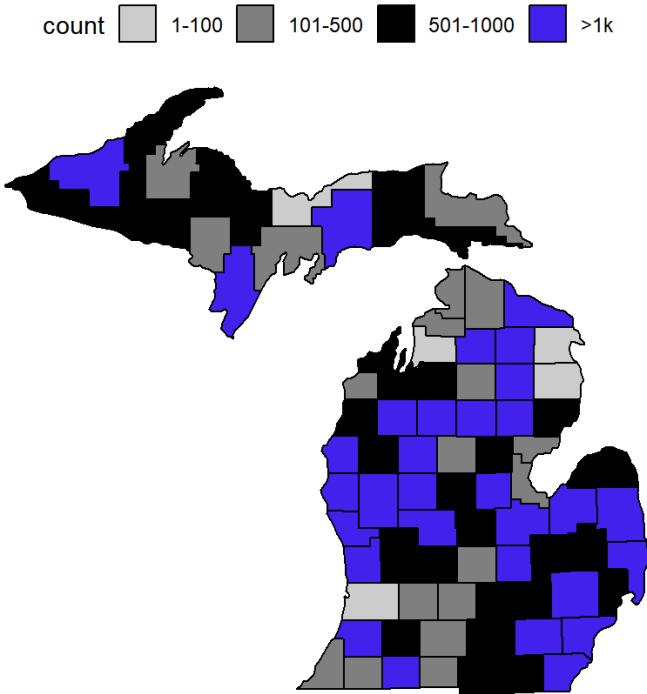


Post-Graduation Outcomes cont.

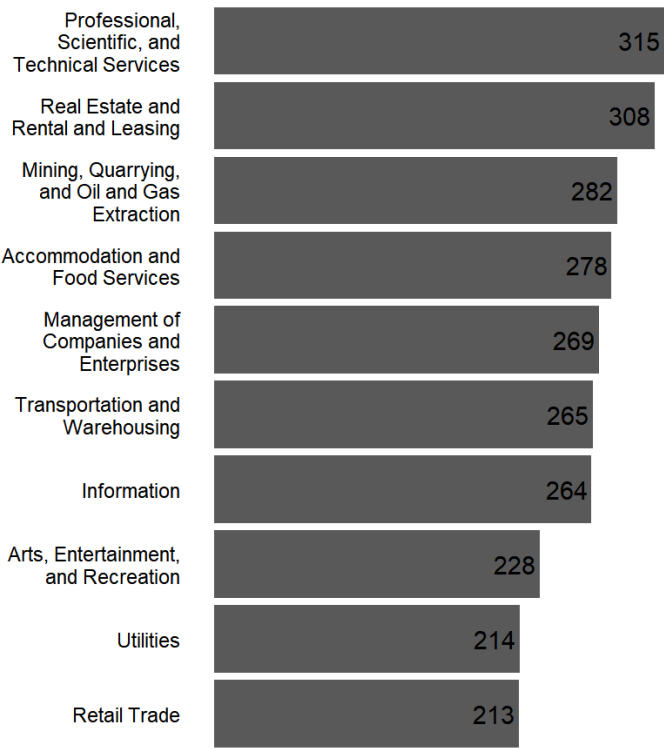
Employment by US State



Employment by MI County



Top Industries Graduates Employed In

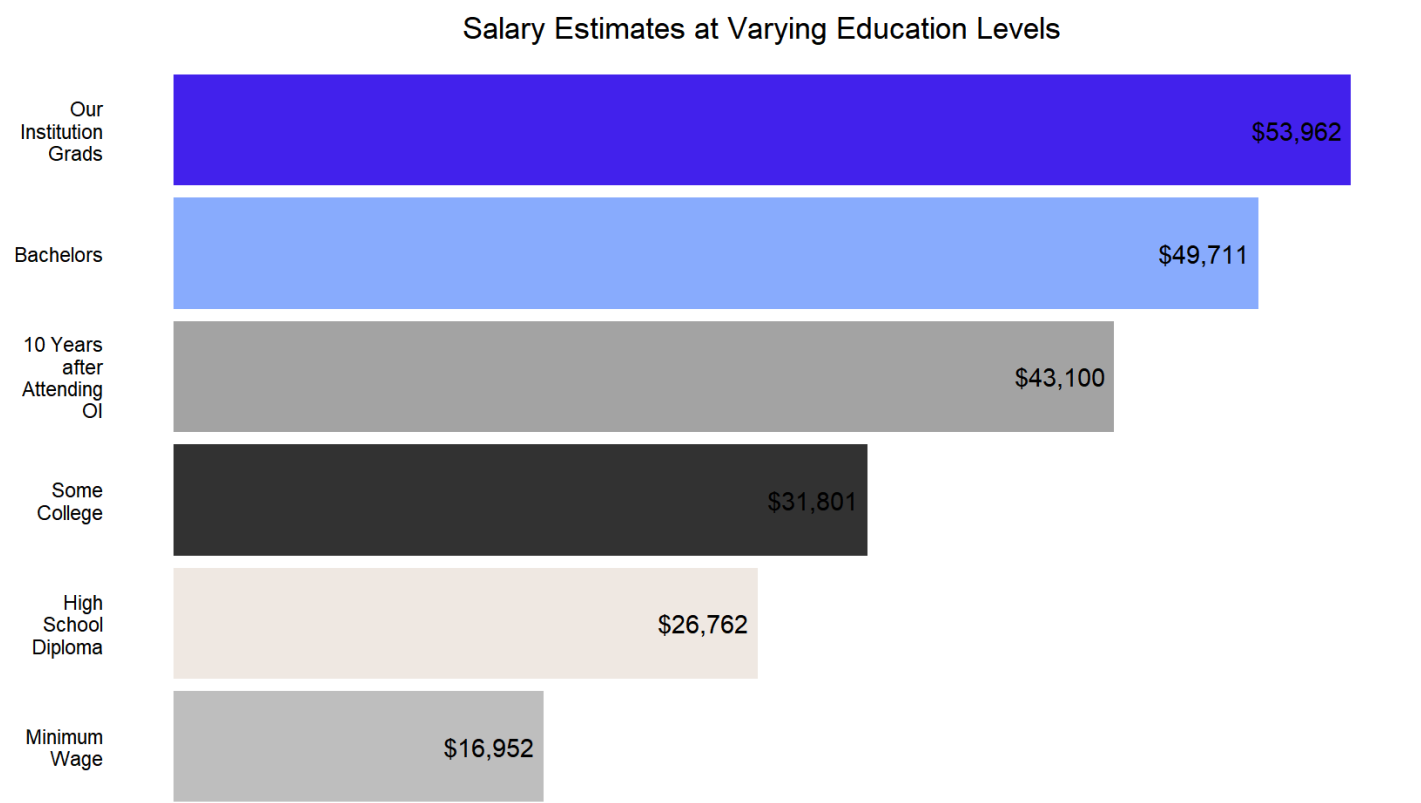


Salary

Median annual salary for Our University graduates are observed to be higher than the yearly earnings of a full-time employee at minimum wage, a high school graduate with no college, an individual with some college, and graduates from other institutions.

Table 2: Median annual salary by school.

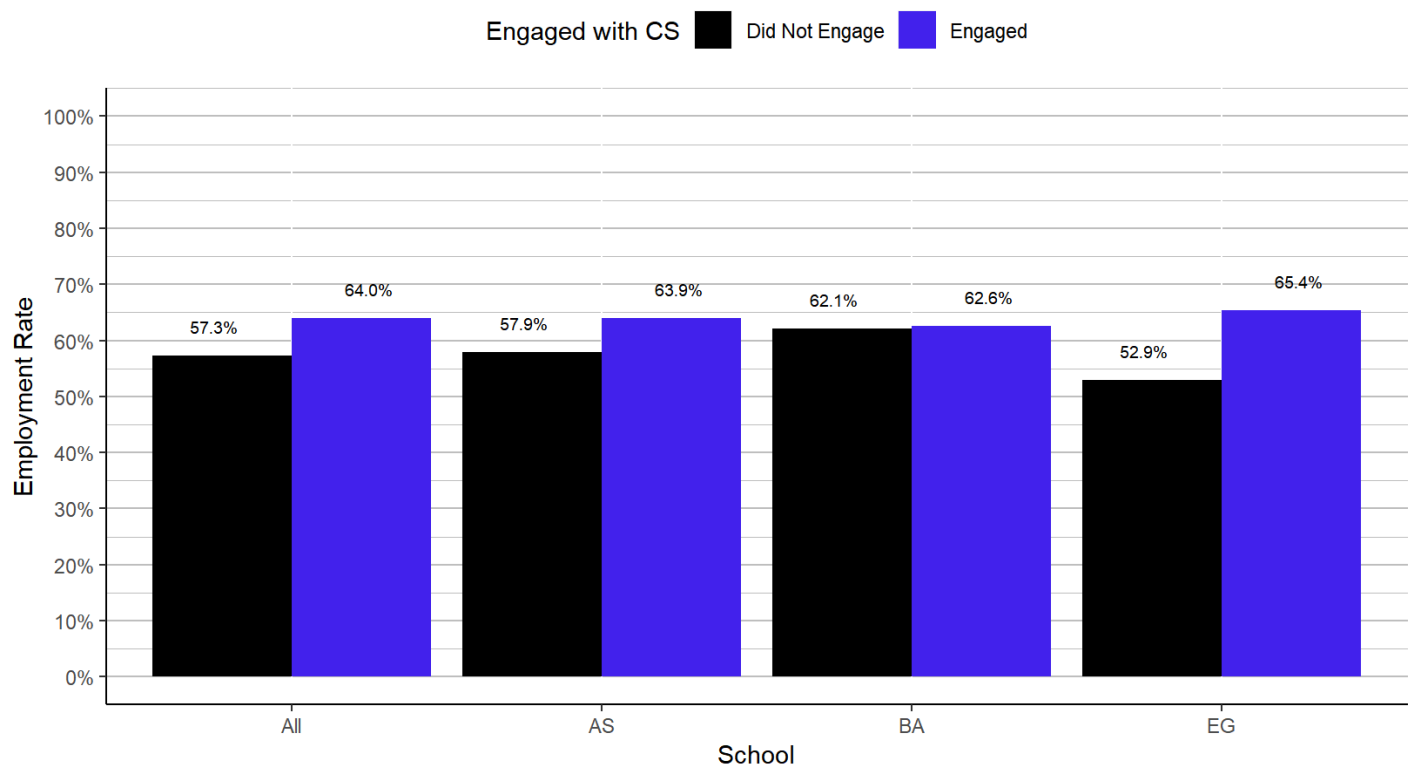
school	Count	Median
All	6367	\$53,961.75
AS	2119	\$47,983.14
BA	2095	\$53,406.32
EG	2153	\$68,963.44



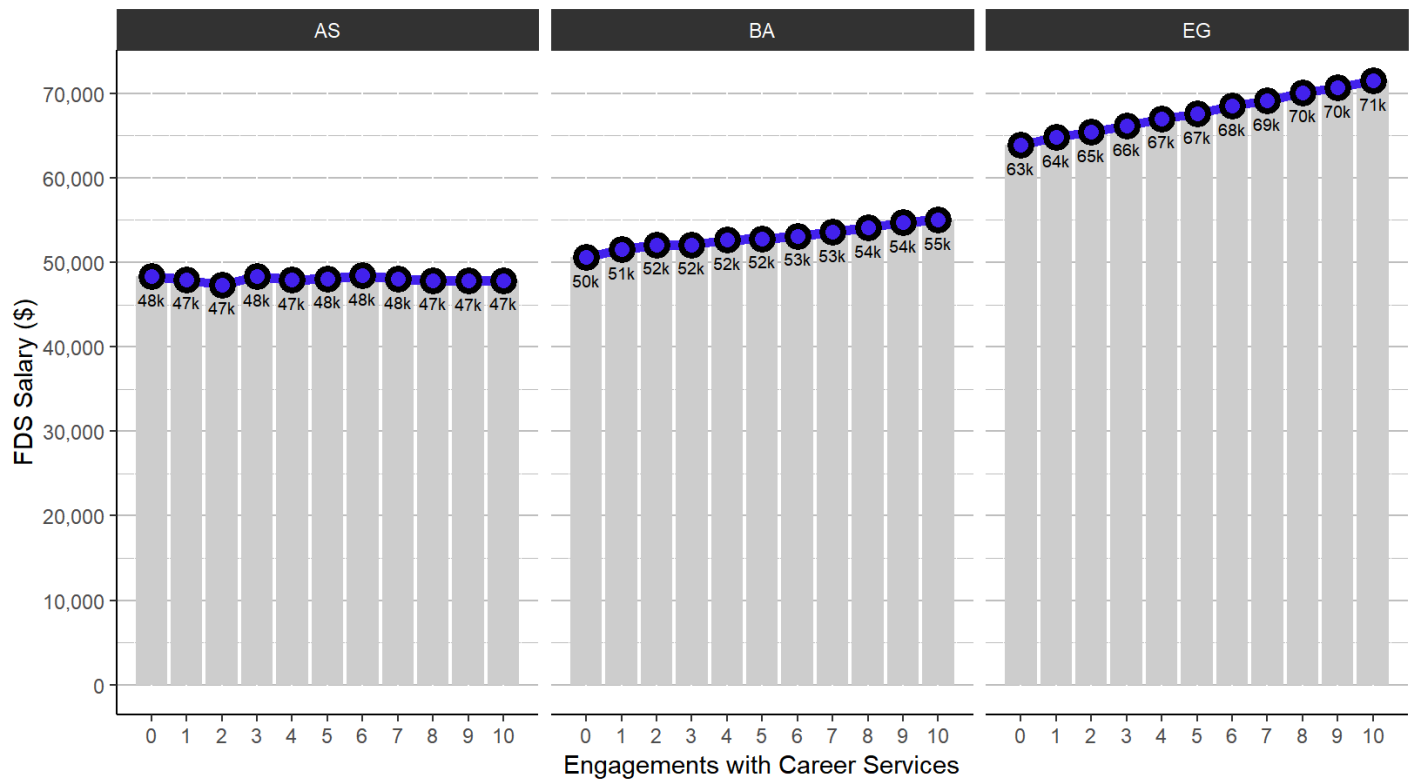
Career Services Effectiveness

The charts and inferential statistics below show that engagement with Career Services is associated with post-graduation employment and salary. They also highlight differences by academic school. However, we cannot be sure that this association is causal. That is, other variables may account for the positive relationship between Career Services engagement and salary such as personality factors (e.g., students who are likely to seek out support services are also likely to acquire higher salaries).

Effect of Career Services Engagement on Employment



Effect of Career Services on FDS Salary



Supporting Inferential Statistics

Career Use Effect on Salary

stat_test.r.squared

0.0141095

Variable	Estimate	Std..Error	t.value	P Value
(Intercept)	54390.7059	275.67125	197.302786	< 0.001
career_use	380.9833	39.91773	9.544214	< 0.001

Career Use and School Effect on Salary

stat_test2.r.squared

0.8981245

Variable	Estimate	Std..Error	t.value	P Value
(Intercept)	45615.7687	103.99511	438.63379	< 0.001
career_use	374.2273	12.83796	29.15006	< 0.001
schoolBA	5489.4561	92.15048	59.57057	< 0.001
schoolEG	20733.3135	91.49875	226.59668	< 0.001

Interaction Effect of Career Use and School on Salary

stat_test3.r.squared

0.9084725

Variable	Estimate	Std..Error	t.value	P Value
(Intercept)	48250.72541	147.71121	326.655805	< 0.001
career_use	-42.29443	21.22378	-1.992785	0.046328
schoolBA	2695.45238	205.63893	13.107695	< 0.001
schoolEG	15681.54468	207.64800	75.519846	< 0.001
career_use:schoolBA	442.36745	29.82779	14.830713	< 0.001
career_use:schoolEG	800.53619	29.89925	26.774456	< 0.001